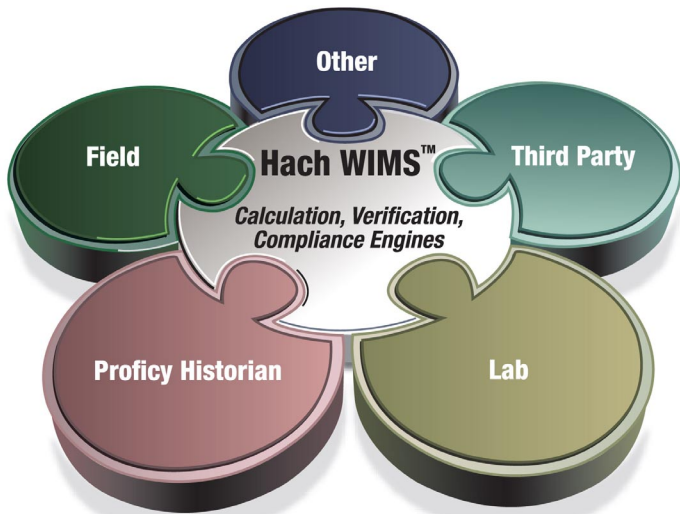


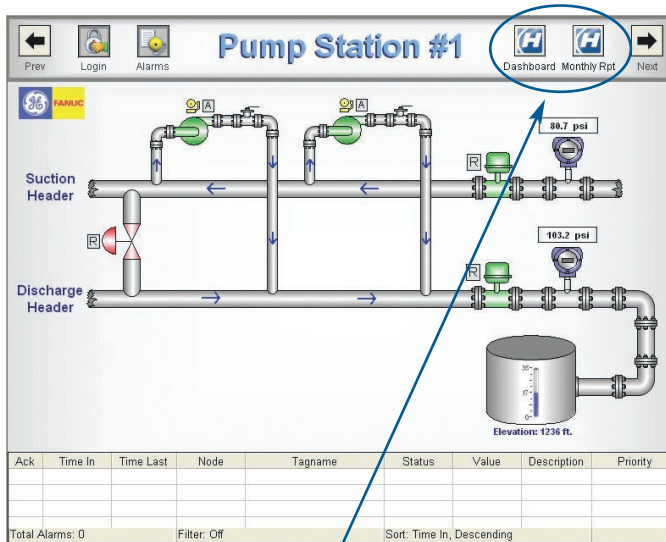
Hach Water Information Management Solution™ (Hach WIMS™) Seamlessly Integrates with GE Fanuc Intelligent Platforms Proficy HMI/SCADA iFIX.

Overview

Hach WIMS automatically captures data from Proficy Historian, combines it with lab, field and other data and securely stores it in a central database. Launch Hach WIMS directly from within the Proficy iFIX runtime environment with the new Water Solution Pack 2008 and use it to generate reports, enter operator log data and provide graphical visualization of data.



Automatically collect data from Proficy Historian —combine with other data sources.



Launch Hach WIMS from Proficy iFix, and visualize large amounts of data as useful information: graphs, reports, etc.

Operators can quickly compare lab, SCADA and field data for troubleshooting and analysis with the touch of a button. Now, powerful water system information is readily available to plant personnel whether they are in front of the HMI/SCADA system, in the office or in the field. The software is configurable to your organization.

Save Time and Resources with Easy Data Access

Maintain data and reporting accuracy with no worries of typos, transcription errors or unapproved data. Data is either transferred electronically or entered manually, and made available to anyone with proper authorization, eliminating wasteful duplication and data corruption. Pre-defined and user-defined reports are available with a mouse click. Data consistency for all is assured since data is stored in a secure database. Authorized users always work with the source data which can be accessed from anywhere.

		Finished Water Chlorine Residual (mg/L)		Finished Water pH (SU)	
		SCADA Readings	Operator Check	SCADA Readings	Operator Check
7	Midnight	2.30	2.11	7.81	7.63
8	1 am	2.40		7.62	
9	2 am	2.30		7.56	
10	3 am	2.30		7.54	
11	4 am	2.30	2.22	7.65	7.66
12	5 am	2.30		7.60	
13	6 am	2.30		7.57	
14	7 am	2.30		7.51	
15	8 am	2.40	2.15	7.53	7.58
16	9 am	2.40		7.54	
17	10 am	2.40		7.52	
18	11 am	2.50		7.50	
19	Noon	2.50	2.16	7.56	7.55

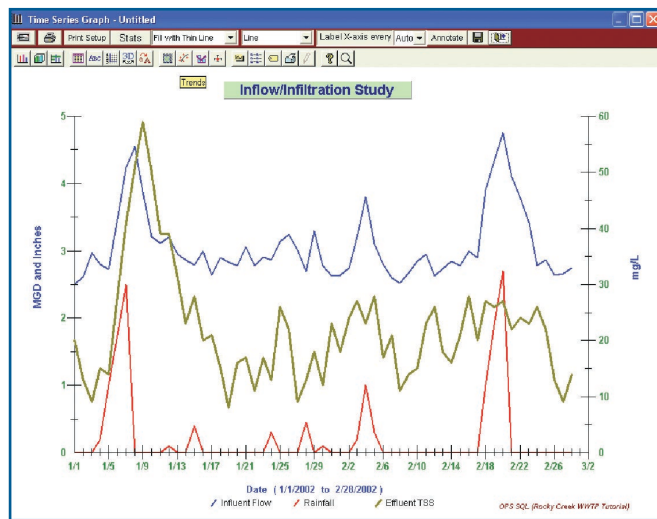
The operator can easily add manual data points into Hach WIMS without leaving the Proficy iFIX environment.

Turn Data into Information

Leverage your Proficy Historian investment by turning the massive amounts of raw data into useful information. Many tags or variables have up to 86,000 values per day and typically only summary data is required for reporting and analysis. To see the overall operation, a combination of data from sources like SCADA, LIMS, commercials labs, in-house labs, outside agencies like the EPA or USGS and the field is required.

PERMITTEE NAME/ADDRESS (Include Facility Name/Location if different)				NATIONAL POLLUTANT DISCHARGE ELIMINATION SYSTEM (NPDES) DISCHARGE MONITORING REPORT (DMR)				COMBINED TREATED PROCESS (SUBR MS)			
Name Rocky Creek WWT/P				D-101				Form Approved			
Address Rocky Creek Village of 4000 Peggy Rd SE				001 0				F-FINAL			
Facility Rocky Creek Wastewater Treatment Plant				PERMIT NUMBER				MAJOR			
Location 1234 Loe Lane				DISCHARGE NUMBER				MUNICIPAL, NO PRE-TREATMENT			
Attn: Clark Kent				MONITORING PERIOD				NO DISCHARGE			
				FROM 09 01 01 TO 09 01 31				NOTE: Read transcripts before completing this form.			
PARAMETER (EPA/MS)	UNIT	QUANTITY OR CONCENTRATION		UNIT	QUALITY OR CONCENTRATION		NO. OF SAMPLES	FREQUENCY	SAMPLE TYPE		
		AVERAGE	MAXIMUM		AVERAGE	MAXIMUM					
800.5 DAY (20 DEG. C)	MEASUREMENT	*****	*****	*****	215	*****	331	(19)	0	DAILY	CONT
00010 1 0 0 (RAW SEW/INFLUENT)	PERMIT REQUIREMENT	*****	*****	*****	REPORT DAILY MN	*****	REPORT DAILY MK	MG/L	1	DAILY	CONT
00010 1 0 0 (EFFLUENT GROSS VALUE PH)	MEASUREMENT	569	1,760	(28)	*****	22	47	(19)	1	DAILY	CONT
00010 1 0 0 (EFFLUENT GROSS VALUE PH)	PERMIT REQUIREMENT	*****	*****	*****	30.00	*****	45.00	MG/L	0	DAILY	CONT
00040 1 0 0 (EFFLUENT GROSS VALUE SOLIDS, TOTAL SUSPENDED)	MEASUREMENT	*****	*****	*****	6.3	*****	7.7	(12)	0	DAILY	GRAB
00040 1 0 0 (EFFLUENT GROSS VALUE SOLIDS, TOTAL SUSPENDED)	PERMIT REQUIREMENT	*****	*****	*****	6.0	*****	8.0	DAILY MN	0	DAILY	GRAB
00030 1 0 0 (EFFLUENT GROSS VALUE FLOW IN CONDUIT OR THRU TREATMENT PLANT)	MEASUREMENT	*****	*****	*****	*****	*****	*****	*****	0	DAILY	CONT
00030 1 0 0 (EFFLUENT GROSS VALUE FLOW IN CONDUIT OR THRU TREATMENT PLANT)	PERMIT REQUIREMENT	*****	*****	*****	30	*****	45	MG/L	0	DAILY	CONT
800.5 DAY PERCENT REMOVAL	MEASUREMENT	*****	*****	*****	79.57	*****	*****	(23)	3	DAILY	CALC.
91010 1 0 0 (PERCENT REMOVAL)	PERMIT REQUIREMENT	*****	*****	*****	85.00	*****	*****	PER CENT	0	DAILY	CALC.

Hach WIMS combines SCADA, lab, field and outside agency data into useful information to create a more complete picture of your system.



Simplify Tasks

The combination of Proficy iFIX with the Water Solution Pack 2008, Hach WIMS and the Proficy Historian simplifies informed decision-making with easy access to accurate information. These powerful tools simplify the set up tasks for fast start up and streamline your overall operations.

For any variable, pick the tag and the summary statistic. The Proficy Historian enables data collection at different collection intervals of milliseconds, seconds, minutes, etc. Hach WIMS will group data by minutes, hours, days, months, years, etc. as needed for reporting and analysis.

A forms driven interface streamlines the set up of the variable definition from Proficy Historian.

For more information on Hach WIMS, please call 1-800-677-0067 or 505-892-6700 or visit: www.hach.com/wims



Be Right™